

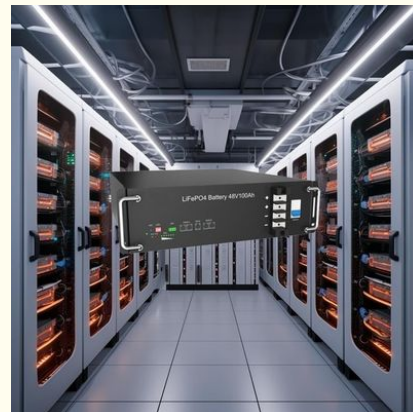


## Solar Energy Storage Rackmount Lithium Battery 48V 51.2V 50ah 200ah 6000 Cycles

Our Product Introduction

### Basic Information

- Place of Origin: China
- Brand Name: XWELL
- Certification: UN38.3, MSDS, UL, CB, BIS, PSE, GB4943.1 safety standard, CE, FCC, ROHS, battery UN38.3, MSDS, UL, CB, BIS, PSE
- Model Number: XW-5120W-1
- Minimum Order Quantity: 1 pcs
- Packaging Details: Carton
- Delivery Time: 7-10 working days
- Payment Terms: L/C, D/A, D/P, T/T, Western Union, MoneyGram
- Supply Ability: 5000 pcs per month



### Product Specification

- Battery Voltage: 48V 51.2V (Optional)
- Battery Type: LiFePO4 Prismatic Cells
- Battery Capacity: 50Ah 100Ah 200Ah (Optional)
- Battery Energy: 2.56Kwh 5.12Kwh 10.24Kwh (Optional)
- Discharge Current: 50A
- Max Charge Current: 50A
- Discharge Cut-off Voltage: 42.5V
- Display: LCD Optional
- Communication Interface: RS485, RS232, CAN
- Cycle Life: >6000 Cycles(80%DOD)
- Highlight: **Rackmount Lithium Battery 51.2V, Rackmount Lithium Battery 200ah, rack mount solar battery 6000 Cycles**

for more products please visit us on [esslithiumbattery.com](http://esslithiumbattery.com)

## Product Description

### Solar Energy Storage 48V 51.2V 50ah 100ah 200ah LFP Rackmount Pack Lithium Battery

The LFP (Lifepo4) lithium battery pack is an optimized solution for residential power storage purpose, with standard 48V/100AH and up to 80% DOD and  $\geq 5000$  charge-discharge cycle-life.

Xwell Solar Battery Key Feature:

1. Safety: Multi-protection from self developed BMS
2. Optimal Electricity Cost: Long cycle life and superior performance
3. Compact Size & East Installation: Module design help for quick installation
4. Easy to Scale Up: Be workable to be parallel based on 48V
5. Compatibility: Compatible with most existing inverter brands

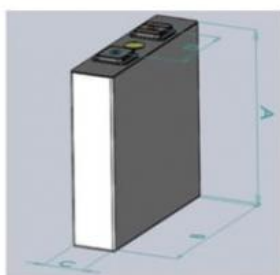
#### Cautions

1. Do NOT short circuit, reverse polarity, crush or disassemble.
2. Do NOT heat or incinerate.
3. Do NOT immerse in any liquid.
4. Store at 30~50% SOC.Recharging every 3 months isrecommended. The storage area should be clean, cool, dry and ventilated.

#### Rackmount Lithium Battery Specification

Model	51.2V50Ah	51.2V100Ah	51.2V200Ah
Nominal voltage	51.2V		
Nominal capacity (kwh)	2.56	5.12	10.24
Cell type	LiFePO4		
Standard charge voltage	54.6V(adjustable)		
Max charge current	50A		
Discharge cut-off voltage	42.5V(adjustable)		
Max discharge current	50A		
Display	LCD(Optional)		
Communication interface	CAN/RS485/RS232		
Cycle life	>6000 Cycles (80%DOD)		
Charge temperature range	0~45°C		
Discharge temperature range	-20~60°C		
Color	Black		
Dimension (mm)	442x410x133 3U	442x410x177 4U	550x442x220 5U
Weight	About 35Kg	About 42Kg	About 84Kg
Installation method	Rack Mount		

#### Cell Specification of Rackmount Lithium Battery

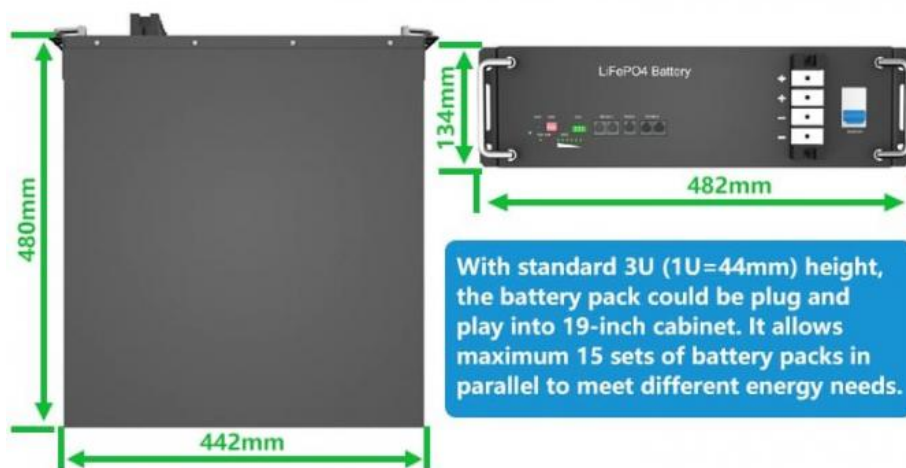


#	Item	Parameter
A	Height	119±1.0 mm
B	Width	160±1.0 mm
C	Thickness	≤ 50 mm
D	Tabs Distance	97±0.5 mm

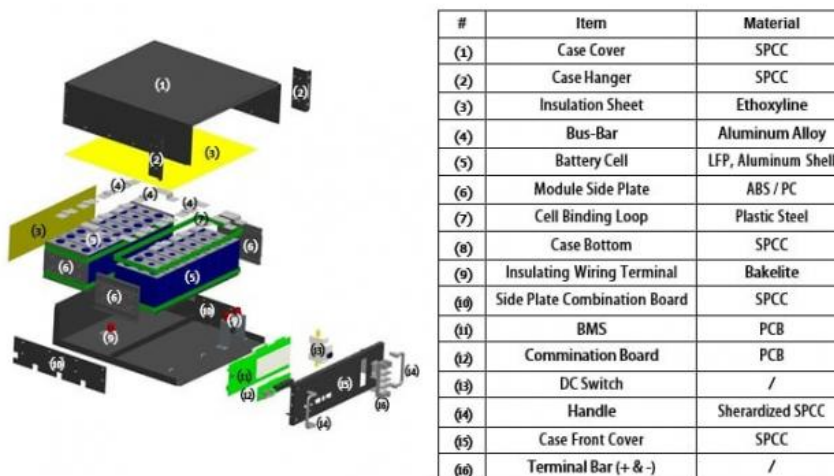
#### Operation Pannel of Rackmount Lithium Battery



### Size of Rackmount Lithium Battery



### Structure of Rackmount Lithium Battery



### Application of Rackmount Lithium Battery

## Application Scenario



Data Center



C&I Park



Telecom Base



Medical Equipment

### What We Offer?

Supply chain solution, strict quality control, real-time response  
OEM/ODM Manufacturer, custom sizes and shapes available on request  
Suggestion of new design or material, new technology and cost structure  
Engineers team at your service  
Flexible small orders are acceptable  
One-stop supply to eliminating messy links



**XWELL** GUANGDONG XWELL TECHNOLOGY CO., LTD.

+86 18620492985

sales@esslithiumbattery.com

esslithiumbattery.com

Room 322, Building 3, No. 801, Qiaoxing Avenue, Xiaoluo Village, Shatou Street, Panyu District, Guangzhou, China